

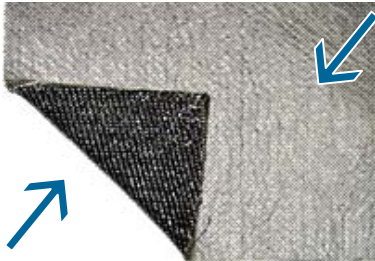
Data Sheet

Waterproofing

Environmental Protection from Rawell



non-woven polypropylene geotextile



woven polypropylene geotextile

RAWMAT® HDB Type P1 Transformer Bund Liner (1m x 5m)

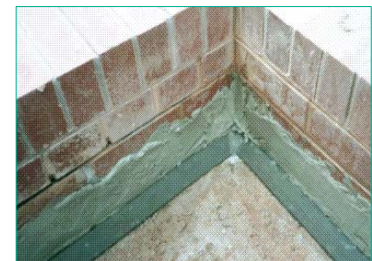
An effective barrier used to prevent the seepage of any cooling oil into the ground below, used in conjunction with sand identification and stone fill layers.

INSTALLATION

Place and compact a 50mm thick layer of dry sharp sand onto the prepared excavation. Trowel apply a 2mm thick layer of RAWPASTE Mastic to the lower 150mm of the bund wall and plinth upstands. Place and thoroughly mix RAWCLAY granules into the top 50mm of sharp sand within 150mm of bund walls and plinths and apply at a rate of 1kg per linear metre.

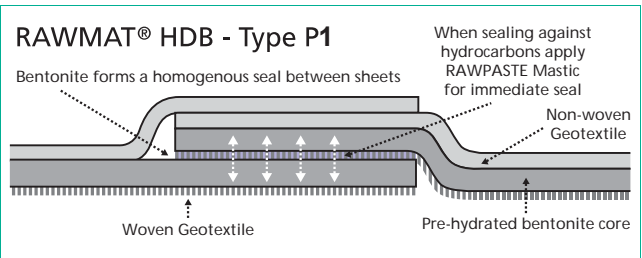


Place and firmly press the RAWSEAL® TR35 fillet into the RAWPASTE Mastic at the base of all bund walls and plinths. Tightly butt or splice together the fillets, then knead the joint together to seal securely. At internal corners, splice and knead two pieces of RAWSEAL® TR35 together at the 90° angle.



When sealing around cable ducts apply a 35mm fillet of RAWPASTE Mastic around the base of any ducts passing through the floor of the bund. To seal around a duct, cut a "patch piece" of RAWMAT® HDB Type P1 membrane 500mm x 500mm, make a star cut in the centre of the sheet to the diameter of the duct, removing the grey non-woven geotextile and placing clay side uppermost. Push the triangles formed by the star cut into the RAWPASTE Mastic.

Apply a thin layer of mastic to the duct and "patch piece". Cut and fix main sheet of RAWMAT® HDB Type P1 membrane, black side down, around the cable duct. Firmly press into the RAWPASTE Mastic. Starting from the bund wall, lay the rolls of RAWMAT® HDB Type P1 with the grey non-woven geotextile side uppermost and the black woven geotextile side onto the prepared formation, across the base of the bund allowing 150mm of membrane to turn up the bund wall and the plinths to both the transformer and cooler.



At the overlaps, fold back the top sheet 150mm (to the lap line). Peel back the grey non-woven geotextile fabric from the lower sheets to expose 150mm of the RAWMAT® HDB Type P1 clay core. (See detail). Apply a 2mm thick layer of RAWPASTE Mastic to the 150mm lap line width on the black geotextile side of the upper sheet. Then press the two sheets firmly together folding. **Under no circumstances shall the non-woven geotextile be contained within the lap** (see detail). Apply RAWMAT® HDB Type P1 membrane to the prepared vertical surfaces covering the TR35 fillet and press into the mastic. Fix the membrane against the transformer plinth, cooler plinth, and bund wall by drilling and plugging through a continuous treated timber batten along the top of the RAWMAT® HDB Type P1.

When sealing internal or external bund corners apply a patch of RAWMAT® HDB Type P1, grey side removed, into the corner with a cut made in the patch into the middle of the patch. Apply this into the corner to form the reinforcement with two "flaps" fed either side of the angle. Apply RAWPASTE Mastic to the patch then lay the main sheet with a similar cut but ensure this is offset from the cut made in the "patch piece".



Once the membrane has been installed and all overlaps and penetrations have been sealed, and before the end of the working day. All exposed membrane shall be covered with a 50mm identification layer of sharp sand directly on the RAWMAT® HDB Type P1 membrane.



For details of Rawell products and services visit www.rawell.com where you can find more information suited to your specific needs, or call +44 (0) 151 632 5771



Where the RAWMAT® HDB Type P1 turns vertically up the plinth or bund wall, the 50mm sand identification layer must be increased in depth and haunched to provide a sand cover against the membrane where it is fixed to the bund wall or plinth.

As part of the ongoing process, limestone chippings must be applied immediately to a minimum depth of 250mm across the whole area of the bund. The bund is then ready for a water test to take place or for immediate use.



HANDLING & STORAGE

RAWMAT® HDB Type P1 is rolled on 50mm cores. Each roll is sealed in airtight stretch film. The rolls are packaged on end into boxes, each box containing 25 rolls. The boxes are sealed with polythene box covers to weatherproof the box. Each box has a unique batch identification code.

The RAWMAT® HDB Type P1 shall be stored and handled strictly in accordance with the manufacturers instructions, given below. Palletised boxes may be stacked two high in their unopened state. The storage area shall be dry and stable. Any RAWMAT® HDB Type P1 damaged during the delivery, storage or handling shall not be incorporated in the works.

Once opened the rolls must be stored under cover or protected with weatherproof sheets to prevent rain damage and drying out. Any part used roll can be re-wrapped and can be re-used if it has been protected in plastic to prevent moisture loss or saturation from rainfall.

All information contained within this document is given in good faith and is correct to the best of Rawell Environmental Ltd.'s knowledge. This information is not legally binding and may be changed at any time without notice.

Rawell Environmental Ltd, Carr Lane, Hoylake, Wirral, Merseyside CH47 4AZ.
Tel. +44 (0) 151 632 5771 Fax. +44 (0) 151 632 0252
www.rawell.com E-mail. postmaster@rawell.com

v. 040914

Type P1 Transformer Bund Liner

Application of Type P1

